

Ravatherm XPS is an extruded polystyrene insulation renowned for its exceptional thermal performance and high compressive strength, making it the preferred choice for a wide range of demanding applications. This high-performance rigid foam insulation offers low thermal conductivity, which effectively minimises heat transfer, while its closed-cell structure ensures low water absorption.

Its durability and ability to maintain performance under various conditions make it a trusted material in a range of markets, including cold storage, touring caravans and campervans, truck panels, building and curtain-walling. Panel Systems is a distributor for Ravago Building Solutions, enabling the supply of a comprehensive range of Ravatherm XPS sheets, hot-wire cut to any thickness, along with CNC-machined components.

Applications:	
PVC-U Door Panels	Portable Buildings
Underfloor Heating	Lightweight Furniture
Caravans & Motorhomes	Craft
Automotive Industry	Sandwich Panels
Packaging	Cavity Closers
Modelling	Truck Panels
Cold Chain	Aluminium Doors

- ✓ Low thermal conductivity
- ✓ Excellent moisture resistance
- ✓ Long term durability and performance
- ✓ Easy and safe to handle
- ✓ Quick and simple to cut and shape
- ✓ Ozone Depletion Potential (ODP) of zero and Global Warming Potential (GWP) of less than five
- ✓ Lightweight, but with high compressive strength
- ✓ Excellent bonding and lamination properties

Ravatherm XPS - cut and fabricated to suit customer needs.



Ravatherm XPS is available in a range of sheet sizes. Lengths vary from 1940mm to 3050mm and widths from 600mm to 1200mm.

2400 x 600mm	1920 x 790mm	2400 x 1200mm
2500 x 600mm	1940 x 810mm	2450 x 1215mm
2150 x 600mm	2150 x 940mm	3050 x 1220mm
3050 x 750mm	2150 x 1200mm	

Hot wire cutting - Panel Systems can hot-wire cut length, width and thickness in a continuous process with a standard tolerance of +/- 0.5mm. This is suitable for most bonding operations.

CNC Machining - Ravatherm XPS is an ideal material for CNC machining. Supported by our in-house CAD facilities, customers can supply their own drawings in a range of file formats to enable rapid prototyping of components.

Sanding - Where improved tolerances are required, Panel Systems offers a comprehensive sanding service to +/- 0.3mm.

Grooving - When manufacturing large panels grooving the Ravatherm XPS can improve the quality of the bond strength. This service is available on hot-wire cut and sanded sheets.

Ravatherm XPS product range available from Panel Systems

New Name	Previous Name
Ravatherm XPS X H LB	Styrofoam LB / XEnergy LB
Ravatherm XPS X 300 SB	Dow Floormate 300A
Ravatherm XPS X 500 SL	Dow Floormate 500A
Ravatherm XPS X 700 SL	Dow Floormate 700A
Ravatherm XPS X 300 SL	XEnergy SL
Ravatherm XPS X MK	XEnergy MK
Ravatherm X PLUS RTM	XEnergy RTM Plus



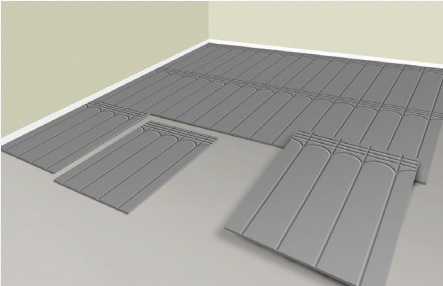
Caravans/motorhomes



Truck panels



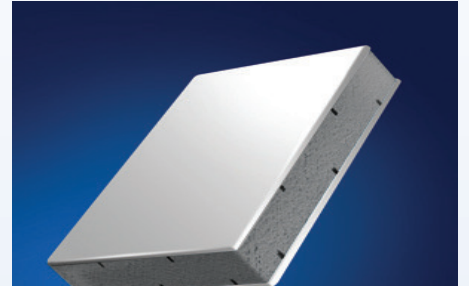
Craft



Underfloor heating



PVC-U door panels



Sandwich panels

Environmental:

Ravatherm XPS is an ideal option for projects requiring proven environmental performance. This material has an Ozone Depletion Potential (ODP) of zero and Global Warming Potential (GWP) of less than five. This helps building designers meet increasingly stringent energy efficiency and sustainability demands. At all times, Panel Systems ensures that the customer achieves their required sheet size with the minimum of waste. Any waste created during production is compacted and recycled.

Properties	Standard	Unit	Ravatherm XPS X H LB	Ravatherm XPS X PLUS RTM
Density (typical value)	EN 1602	kg/m ³	32	40
Thermal Conductivity declared	EN 13164	W/(m.K)	0.030 (<150mm) 0.031 (≥150mm)	0.029
Compressive stress or compressive strength @ 10% deformation	EN 826	kPa	300	400
Tensile Strength	EN 1607	kPa	600	900
Shear Strength	EN 12090	kPa	250	400
Compressive creep after 50 years ≤ 2% deformation under stress	EN 1606	kPa	-	140
E Modulus	EN 826	MPa	12 (≤30mm) 15 (30<≤80mm) 20 (>80mm)	17 (≤30mm) 22 (30<≤80mm) 28 (>80mm)
Tensile Modulus	EN 1607	MPa	24(>50mm)	28 (≥50mm)
Shear Modulus G	EN 12090	MPa	8	10
Water vapour diffusion resistance factor (tabulated value)	EN 12086	-	150	150
Long term water absorption by total immersion	EN 12087	%	1,5	1,5
Dimensional stability under specified temperature (70°C) and humidity conditions (90%rh)	EN 1604	%	<5	<5
Coefficient of linear thermal expansion (typical value)	-	mm/(m.K)	0,07	0.07
Reaction to fire Euroclass	EN 13501-1	-	E	E
Temperature limits	-	°C	-50/+75	-50/+75

Data correct as at January 2026. Up to date manufacturers data sheets are available upon request.