

Styroloft® by Panel Systems

Styroloft® is an energy efficient, lightweight alternative to chipboard and can be used when boarding out loft areas to provide additional storage space.

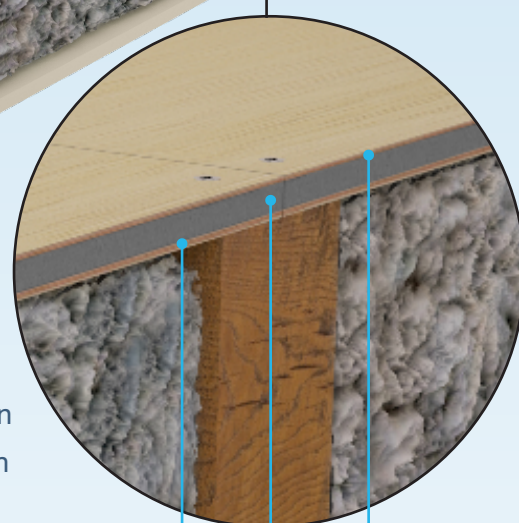
The panels are manufactured from a high performance Ravatherm XPS insulation core faced each side with 4mm birch plywood. The panels are robust enough to provide a durable floor space that will be subjected to low level foot traffic and are ideal for topping up insulation.

Styroloft® panels are available in a range of thicknesses from 18mm to 115mm. Each panel measures 1200mm x 400mm to ensure an easy fit through the average loft hatch.

- ✓ Reduce heat loss through the loft space
- ✓ Reduce heating bills
- ✓ Provide an excellent base for storage and additional insulation
- ✓ High quality birch plywood finish
- ✓ Compact size
- ✓ Choice of five thickness for extra insulation

In comparison to chipboard:

- 18mm provides 2.5x more insulation
- 33mm provides 6x more insulation
- 50mm provides 10x more insulation
- 80mm provides 15x more insulation
- 115mm provides 25x more insulation



4mm Birch Plywood face

Ravatherm XPS core

4mm Birch Plywood face

	Thickness (mm)	Approx. Weight (kg/m ²)	Approx. Thermal Resistance (m ² /Kw)	Minimum Order Qty
Chipboard	18	12.5	0.13	-
Styroloft 18	18	6.1	0.3	20
Styroloft 33	33	6.6	0.8	20
Styroloft 50	50	7.2	1.3	20
Styroloft 80	80	8.1	2.2	20
Styroloft 115	115	9.3	3.3	20

PLEASE NOTE: Styroloft® is designed as a lightweight loft lining panel subject to low level foot traffic. It is not suitable for use as a domestic flooring panel or for converting a loft into anything other than an additional storage solution.



Installation Tips

Styroloft® is quick and easy to cut with standard hand tools and is supplied with fixing screws, making installation as simple and straight forward as possible.

Styroloft® should be fitted over timber joists in a brick pattern. The spacing between timbers should not exceed 600mm and a minimum of two opposite edges must be fully supported on the joists. The panels should preferably be fixed to the joists with a minimum of four screws per panel. Panels should be butt jointed with each edge supported by a minimum of 15mm on the joist.

At Panel Systems, we pride ourselves on our high level of quality and service. All our products are manufactured to standard BS EN ISO 9001:2015. With a highly experienced team of customer service staff, CAD designers, production operatives and logistics specialists, we have the capabilities to manufacture high quality, custom-made panels in both small and large quantities.

We are located in Sheffield close to the M1, and therefore ideally situated for either collections, or delivery direct to customers throughout the UK and beyond.



Orders for Styroloft can be placed via our online shop at www.panelsystems.co.uk. If you require further assistance, please contact our sales office on **0114 275 2881** or email acp@panelsystems.co.uk