

# Non-Combustible Architectural Panel Products

All certified with a minimum A2 classification against EN13501-1

Panel Systems offers a wide range of high quality, non-combustible architectural panel products certified to at least A2 classification against EN13501-1. Our product range includes glazing panels, pressed metalwork, aluminium honeycomb and all the major facade cladding brands. All are designed to meet the performance requirements for building envelope projects.

Our 60 strong team of customer service, CAD designers, technical staff and production operatives enables Panel Systems to offer assistance to help meet performance targets such as thermal, acoustic, wind loading and fire performance.

All production and management systems are approved to BS EN ISO 9001:2015 to give customers greater peace of mind.

## Cladding and Building Boards

Panel Systems' wide range of cladding and building boards are ideal for use in construction projects, either as part of the façade build up or as an outward facing architectural panel. Our Beam Saw and 3/5 axis CNC routing technology allows us to create bespoke shapes and sizes to suit most projects and fixing systems.



### Our range of products include:

**Etex Equitone cladding (A2)** - A through-coloured facade material that is unique in showing the raw, untreated texture of the fibre cement, composite base material.

**Rockwool Rockpanel FS-XTRA (A2)** - Produced from basalt, Rockpanel boards are lightweight, durable, workable and very low maintenance. The boards are 100% weather, temperature and UV proof and are treated with a water-based coating that keeps their appearance, colour and finish for many years.

**Cembrit Cladding Panels (A2)** - Offers great durability with virtually no maintenance requirements and a natural look and feel. The panels are also weather, rot and fungal resistant.

**Hardie Panel (A2)** - Large format, external cladding panels offering high aesthetics alongside strength, durability and extreme weather resistance and are proven to stand strong even in adverse storms.

**Valcan (A1/A2)** - Stable, easy to install and lightweight rainscreen, metal composite or decorative panels ideal for external and internal facades, facias and sun blades.

Using the latest optimisation software to maximise panel usage, minimise wastage and keep costs to a minimum, Panel Systems offers a bespoke cutting and fabrication service as standard on any order. This means all cladding and building boards purchased through the company can be delivered ready to install, with no further cutting, drilling or shaping required – reducing the time spent on site.

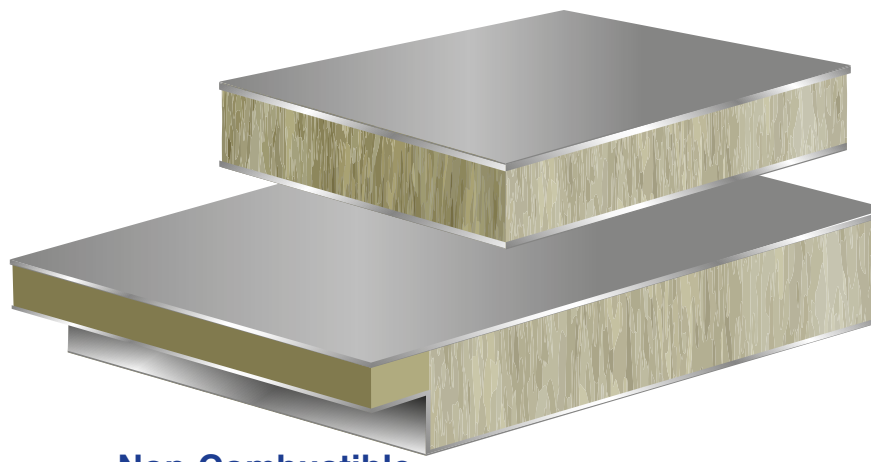
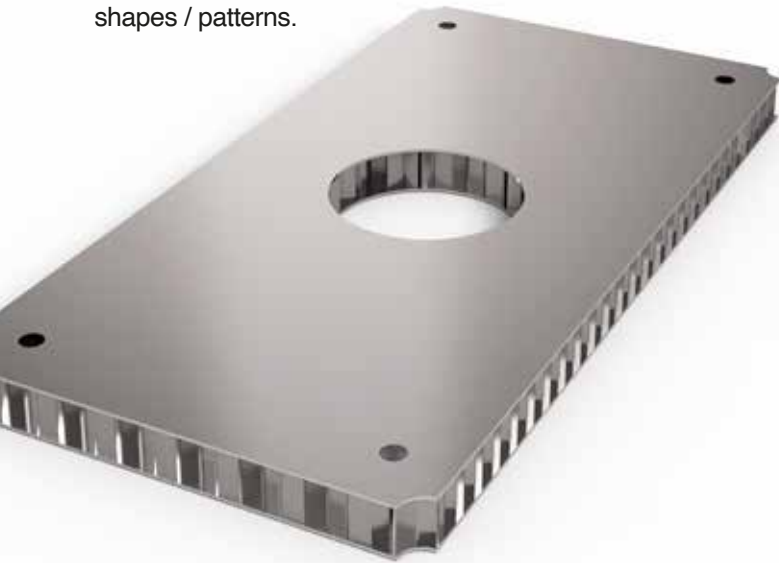
With over 45 years' experience and technical knowledge of these products and materials, alongside a facility equipped with one of the UK's most diverse collections of fabrication equipment, Panel Systems offers the nation's leading end to end cladding service.

## Aluminium Honeycomb

Panel Systems' aluminium honeycomb panels are ideally designed for use in some of the most demanding architectural applications.

Manufactured in a continuous process with an aluminium honeycomb core and aluminium skins, the Larcore A2 certified panels are coated with a primer suitable as a finished surface or for further processing including bonding and colour coatings.

The panels are available to purchase in standard sheets of 3120 x 1500mm. Alternatively, utilising Panel Systems' expert CNC cutting service, the panels can also be fabricated to meet bespoke size requirements and complex shapes / patterns.



## Non-Combustible Glazing and Curtain Walling Panels

Panel Systems' range of non-combustible A2 tested insulated panels for glazing and curtain walling applications are manufactured at the company's Sheffield based facility. The range achieved A2-s1,d0 classification when tested against the procedures detailed in EN 13501-1:2018.

Compliant with UK Building Regulations, each panel has been specifically designed with a fire resisting, non-combustible core of Nexus Stone Wool Lamella, the fire safe material for composite structures.

Available in both Anodised and Polyester Powder Coated (PPC) aluminium facings, the panels are subject to a bespoke, controlled manufacturing process, which includes stringent quality checks in all elements to ensure that each one meets the required standard of the tested specifications.

The panels also have excellent thermal & acoustic properties (calculations of which are available upon request) and can be manufactured to meet specific U-value and wind loading requirements.

## About Panel Systems

Since 1974 Panel Systems has built a reputation as an expert in the manufacture of innovative, bespoke panels for a diverse range of markets. This includes the fabrication of high quality architectural composite panels and cladding for building facades and other applications such as lightweight structures.

The company's two factories, spanning more than 60,000 ft<sup>2</sup>, are equipped with the latest technology and state-of-the-art manufacturing equipment, which includes:

- ✓ 3 & 5 Axis CNC Machines
- ✓ 5m CNC Controlled Beam Saw
- ✓ 5m x 4m Vacuum Presses
- ✓ 4000mm Guillotine
- ✓ 4000mm Press Brake
- ✓ CNC Metal Punching and Perforating
- ✓ Aluminium Welding

Located in Sheffield close to the M1, Panel Systems is ideally situated for delivery of product direct to sites throughout the UK and beyond.

### Accreditations and Certifications

- ✓ A2-s1,d0 to EN 13501-1:2018.
- ✓ BS EN ISO 9001:2015
- ✓ FORS Bronze
- ✓ Made in Sheffield
- ✓ Investors in People



For pricing, or to discuss your requirements in more detail, please call 0114 249 5635 or email: [sales@panelsystems.co.uk](mailto:sales@panelsystems.co.uk).

[www.panelsystems.co.uk](http://www.panelsystems.co.uk)