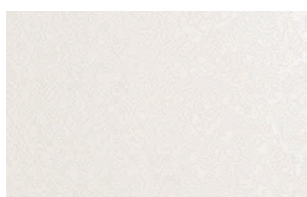


Colorcoat® LG

Pre-finished steel for roof and wall cladding



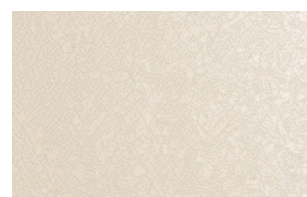
White **CD1** 00E55



Goosewing Grey **CD1** 10A05



Meadowland **CD1** 12B17



Hamlet **CD1** RAL 9002



Albatross **CD1** 18B17



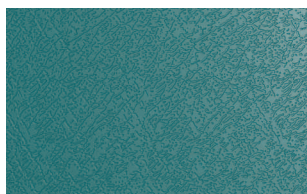
Merlin Grey **CD1** 18B25



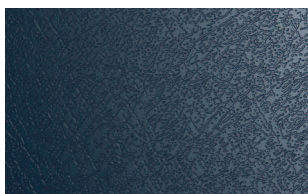
Moorland Green **CD1** 12B21



Honesty **CD1** 10C31



Wedgewood Blue **CD1** 18C37



Raven **CD2** 18B29



Heritage Green **CD2** RAL 6002



Mushroom **CD1** 10B19



Ocean Blue **CD2** 18C39



Anthracite **CD2** RAL7016



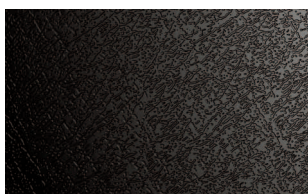
Olive Green **CD1** 12B27



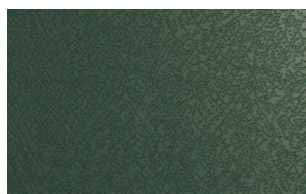
Terracotta **CD2** 04C39



Sargasso **CD2** RAL 5003



Black **CD1** 00E53



Juniper Green **CD2** 12B29



Vandyke Brown **CD2** 08B29

Notes

1. The standard colour references shown above are the nearest equivalents.
2. The printed colours shown for Colorcoat® LG are for guidance only. For a true representation of colour and effect, please obtain product samples from the Colorcoat Connection® helpline.
3. If an exact match between components and Colorcoat® LG is essential, this is best achieved by matching to the actual cladding delivered to site.

Colorcoat® LG

Available from Corus, Colorcoat® LG is a leathergrain plastisol product suitable for roof and wall cladding systems where good performance is required at a competitive price.

- 200 micron durable, abrasion-resistant topcoat.
- Comes with leathergrain emboss.
- Available in the most popular colours in standard sizes.
- Galvanised substrate to EN10326/10327 offering good corrosion resistance.
- Available with a performance guarantee up to 25 years including cut edges.
- High performance reverse side backing coat as standard.
- Manufactured in the UK by Corus, who have a proven track record in pre-finished steel.

Colorcoat® reassurance

The Colorcoat® brand provides the recognised mark of quality and expertise from Corus. Encompassing 40 years of innovation, strict testing procedures and manufacturing excellence, Colorcoat® provides a range of pre-finished steel products which have been used on countless projects worldwide.

Product performance

Colorcoat® LG is carefully manufactured in a controlled process to ensure consistent quality.

The use of Colorcoat® LG in aggressive environments is not recommended. For optimum levels of performance, supported by the market leading Confidex® Guarantee, always specify Colorcoat HPS200® Ultra.

Guarantee periods

Colorcoat® LG comes with a performance guarantee of up to 25 years, including cut edges. This is made available through the cladding system manufacturer or distributor.

Colorcoat® LG guarantee cover

Colour Band	Inland		Coastal	
	Walls	Roofs	Walls	Roofs
CD1	25 years	25 years	20 years	20 years
CD2	20 years	15 years	15 years	10 years

Notes

1. Guarantee periods quoted are applicable to UK and Ireland only.
2. Figures under coastal heading are buildings within 2 km of the sea.
3. Full terms and conditions of the Colorcoat® LG guarantee are on the reverse of the guarantee application form available from Colorcoat® supply chain partners.

Product testing

To ensure the integrity of Colorcoat® products, Corus uses laboratory tests to measure their performance against corrosion, effect of sunlight, chemicals and abrasion. All testing of products is carried out in accredited laboratories to international standards.

Typical properties

Colorcoat® LG Property	Data	Test
Total dry film thickness (µm)	200	EN13523-1
Gloss % (60°)	15-35	EN13523-2
Scratch resistance	>3500 g	EN13523-12
Abrasion resistance (Taber, 250 rev, 1 kg)	10-12 mg	EN13523-16
Flexibility: Reverse impact (Joules)	18	EN13523-5
Adhesion (cross hatch)	100% Pass	EN13523-6
Min. bend radius (T)	0 at 16°C	EN13523-7
Corrosion resistance: Salt spray (hours)	1000	EN13523-8
Humidity (hours)	1000	EN13523-25
Max. continuous operating temp. (°C)	60°	Corus
Minimum forming temp. (°C)	0°	Corus
Reaction to fire	Class 0	BS476 part 6 & 7
Resistance to fire	Class AA	BS476 part 3

General notes

The figures contained in this table are typical properties and do not constitute a specification. Corus can also provide fire performance data to European Classification standards. These figures relate to the top-coat. For details of test methods see www.colorcoat-online.com

Contact details

Corus Colors

Shotton Works Deeside
Flintshire CH5 2NH
United Kingdom
T: +44 (0)1244 812345

Colorcoat Connection® helpline

T: +44 (0)1244 892434
F: +44 (0) 1244 836134
E: colorcoat.connection@corusgroup.com
W: www.colorcoat-online.com

Trademarks of Corus

Albatross, Burano, Colorcoat, Colorcoat Connection, Colorcoat HPS200 Ultra, Confidex, Hamlet, Heritage Green, Honesty, Meadowland, Moorland Green, Mushroom, Olive Green, Petra, Sargasso, Solent Blue and Svelte Grey are trademarks of Corus.

Corus is part of the Tata Steel group. Care has been taken to ensure that the contents of this publication are accurate, but Tata Steel UK Limited and its subsidiary companies do not accept responsibility for errors or for information that is found to be misleading. Suggestions for, or descriptions of, the end use or application of products or methods of working are for information only and Tata Steel UK Limited and its subsidiaries accept no liability in respect thereof.

Before using products supplied or manufactured by Tata Steel UK Limited and its subsidiaries the customer should satisfy themselves of their suitability.

Printed on material which is manufactured from ECF (Elemental Chlorine free) pulp sourced from certified or well managed forests and plantations. Inks used are vegetable based.

Copyright 2008 Corus
Language English 0608