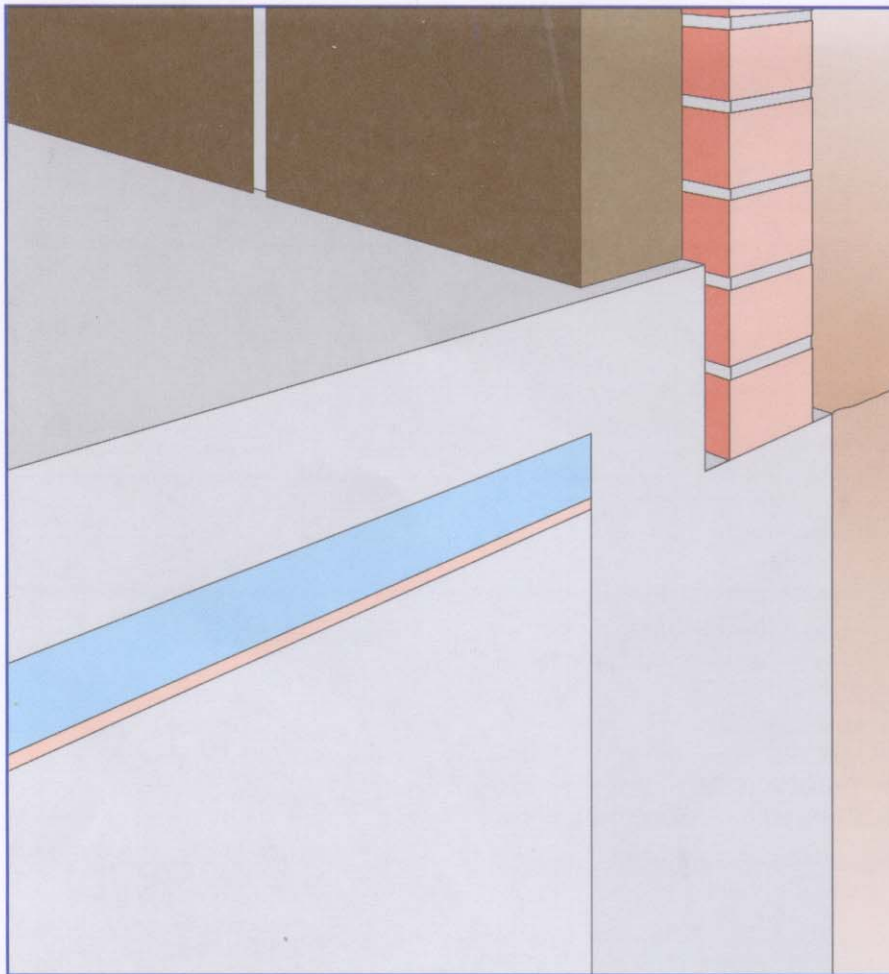




STYROCLAD®

An insulated soffit lining panel comprising a high impact facing board and Styrofoam, an extruded polystyrene.

Styroclad is easily installed to an exposed floor slab including car-parks and thoroughfares to provide thermal insulation.



Physical Properties

- **Size:**
2400 x 1200mm
- **Thickness:**
Facing Board 4mm - 8mm
Styrofoam 20mm - 100mm
- **Weight:**
4.5kg/m² - 12kg/m²
- **Styrofoam Density:**
30kg/m³
- **Thermal Conductivity**
Impact Board - 0.30 W/mK
Styrofoam - 0.027 W/mK
- **Compressive Strength:**
Styrofoam - 300 KN/m²
- **Water Vapour Resistivity:**
Styrofoam - 520 MNs/gm

Benefits

- **Suitable for external use**
- **Self finished**
- **Long term thermal insulation**
- **Easy to install**

PANEL
SYSTEMS



STYROCLAD®

Introduction

Upgrading of exposed floor slabs is often not possible internally, but the external qualities of Styroclad ensure that quickly and with the minimum disruption, insulation and surface finish are provided in one operation.

The Product

Styroclad is a factory bonded laminate comprising 4.5mm (6mm is optional) Masterclad and Styrofoam. Masterclad is a non-asbestos board manufactured from Calcium Silicate. It is fully compressed and autoclaved to provide high moisture and chemical resistance, combined with low alkalinity. Styrofoam is a closed cell extruded polystyrene. It combines low thermal conductivity with a high resistance to moisture to ensure permanent long term insulation.

Styroclad is available as standard in three thicknesses 24.5mm, 44.5mm and 64.5mm. Non standard thicknesses are available upon request to meet specific design criteria on site.

Styroclad Fixing

Styroclad may be fixed directly to concrete or, if the surface is particularly uneven, timber battens may be used.

When fixing directly to the concrete, a bedding adhesive such as Ardurit X7 can be used to create a level surface. Where the surface is level, mechanical fixings at 600mm centres should be used. It is recommended that a proprietary metal fastener such as Buildex Tapcon or Hilti IDMR is used. The fixing should achieve 25mm penetration into the concrete although this may vary with the specified metal fastener.

The board contains no harmful fibres and can easily be cut on site.

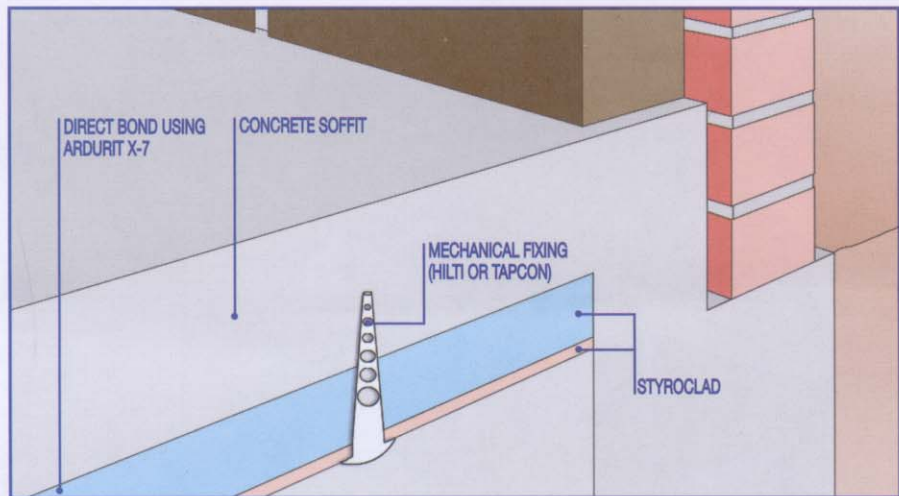


Table of 'U' Values (W/m²K)

CONSTRUCTION	UNINSULATED 'U' VALUE	'U' VALUES STYROFOAM THICKNESS		
		30mm	46mm	75mm
Exposed Soffit floor consisting of 75mm cement/sand screed laid on 150mm dense aggregate concrete slab.	2.04	0.60	0.45	0.3

ALTERNATIVE FACING

A range of facing are available on Styroclad including

- ◆ MASTERCLAD
- ◆ MINERIT HD or MP
- ◆ TACBOARD
- ◆ CEMENT CHIPBOARD e.g. PYROK

Facing thickness depends on application & method of fixing.

4mm/5mm is suitable for most applications. If additional impact resistance is required then 6mm is recommended. If fixings are required with a countersunk hole, 8mm may be preferred.

® Registered Trade Marks

Styroclad is a registered trademark of Panel Systems Limited

Styrofoam is a registered trademark of Dow Chemical Company Limited



INVESTOR IN PEOPLE

Technical Support

Panel Systems offer a full support service including the calculation of 'U' values, Interstitial Condensation analysis and SAP ratings.

Specification

Product: Styroclad
Size: 2400 x 1200 x 36mm
Fixing: In accordance with manufacturers recommendations

PANEL SYSTEMS

Panel Systems Limited

Units 3-9 Welland Close
Parkwood Industrial Estate
Rutland Road
Sheffield S3 9QY

Telephone: (0114) 27 52 881
Facsimile: (0114) 27 68 807 / 27 86 840
eMail: sales@panelsystems.co.uk
Website: www.panelsystems.co.uk